

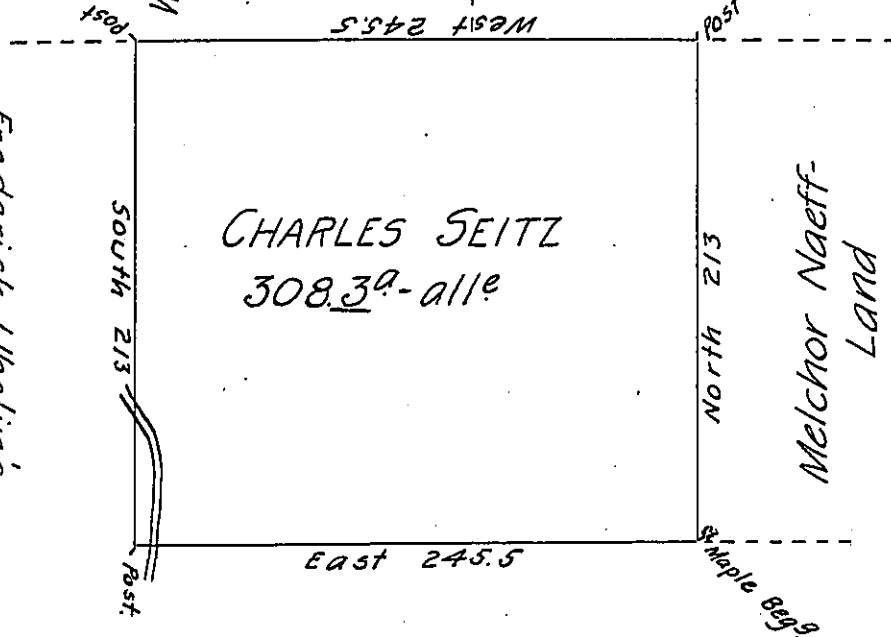
C112269

251-279
Alexander Grant Land

William McMurray & David Duncan's Land

Frederick Ubelin's Land

278174



Reuben Hains

F-331

The Draught of a Tract of Land called _____ Situate in Penns Valey, Northumberland County, containing Three Hundred & Eight acres and Fifty one perches with the Usual Allowance of Six Acres $\frac{1}{2}$ Cent for Roads &c. Surveyed the 18th Day of June Anno Domini 1774. In pursuance of a Warrant from the Honorable the Proprietaries To Charles Seitz Bearing Date at Philadelphia the 6th Day of January Anno Domini 1773.

Wm Maclay - -

To John Lukens, Esq^r. S. G. }
of Pennsylvania.

IN TESTIMONY that the above is a copy of the original remaining on file in the Department of Internal Affairs of Pennsylvania, made conformably to an Act of Assembly approved the 16th day of February, 1833, I have hereunto set my Hand and caused the Seal of said Department to be affixed at Harrisburg, this ninth day of November 1906.

Isaac R. Brown
Secretary of Internal Affairs.